

Server name: Automatically detect the server by selecting Auto Account Setup.

- h. Click **Finish**. Then, repair the email account based on the topic 2.1.

7. How to set up Office 365 on Android Phone?

FOLLOW THE STEPS BELOW TO SYNC YOUR 1&1 OFFICE 365 ACCOUNT WITH YOUR ANDROID PHONE. BEFORE YOU BEGIN, YOU WILL NEED TO SET UP OFFICE 365 ACCOUNT IF YOU HAVE NOT ALREADY.

Find and click Email on your Android phone.

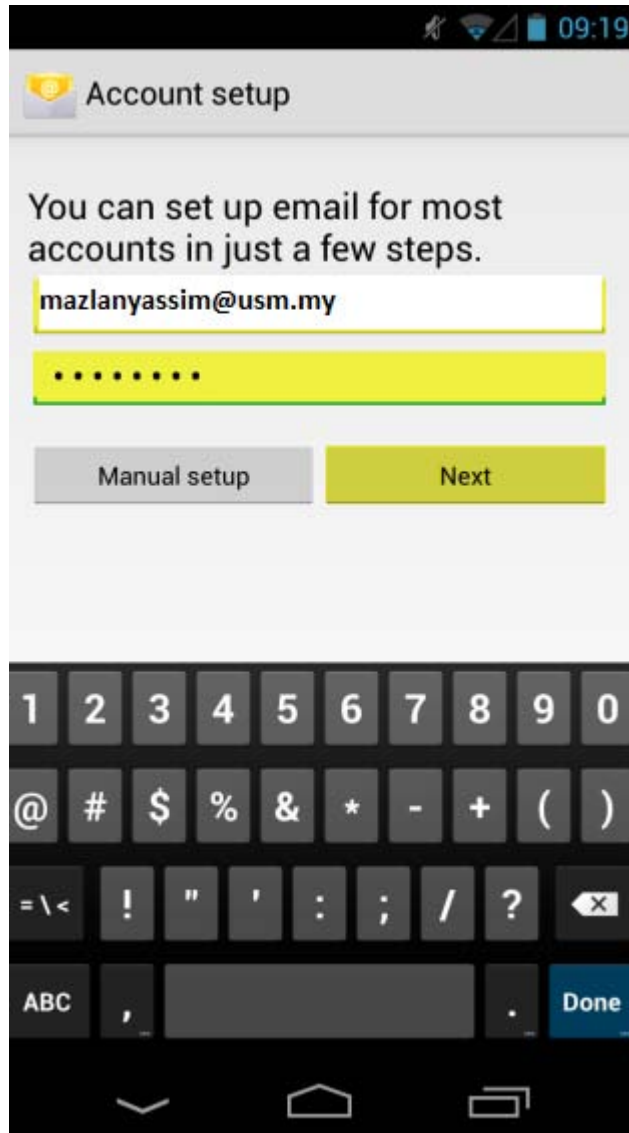
Step 1



Click Email

Step 2

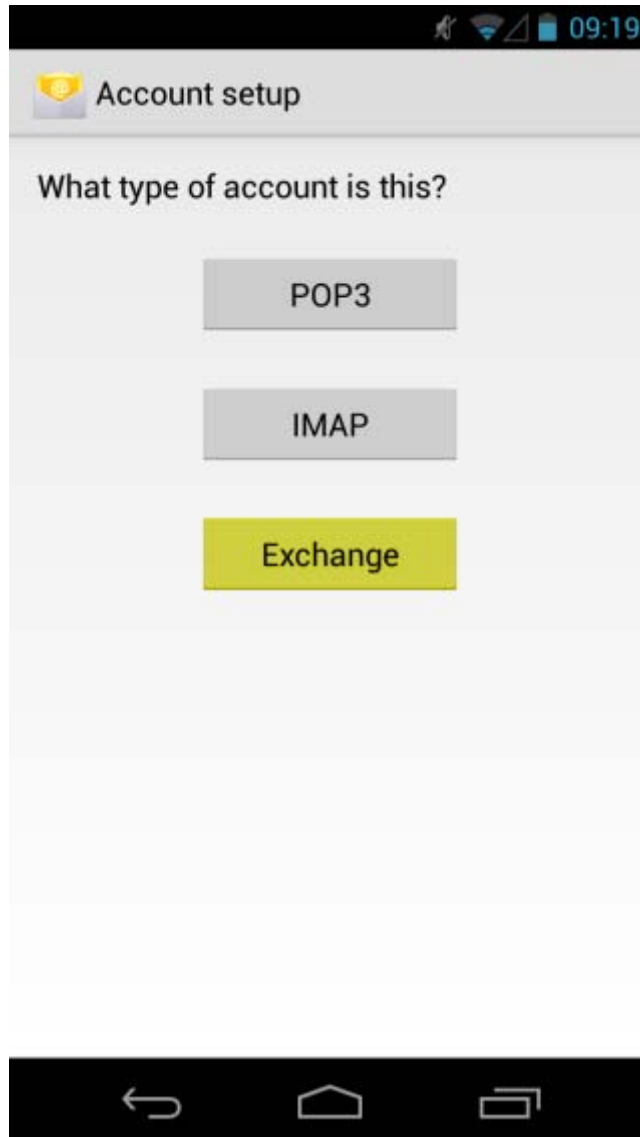
Enter your 1&1 E-mail address and password and click **Next**.



*Enter your e-mail address and click **Next***

Step 3

Choose Exchange as the type of account.

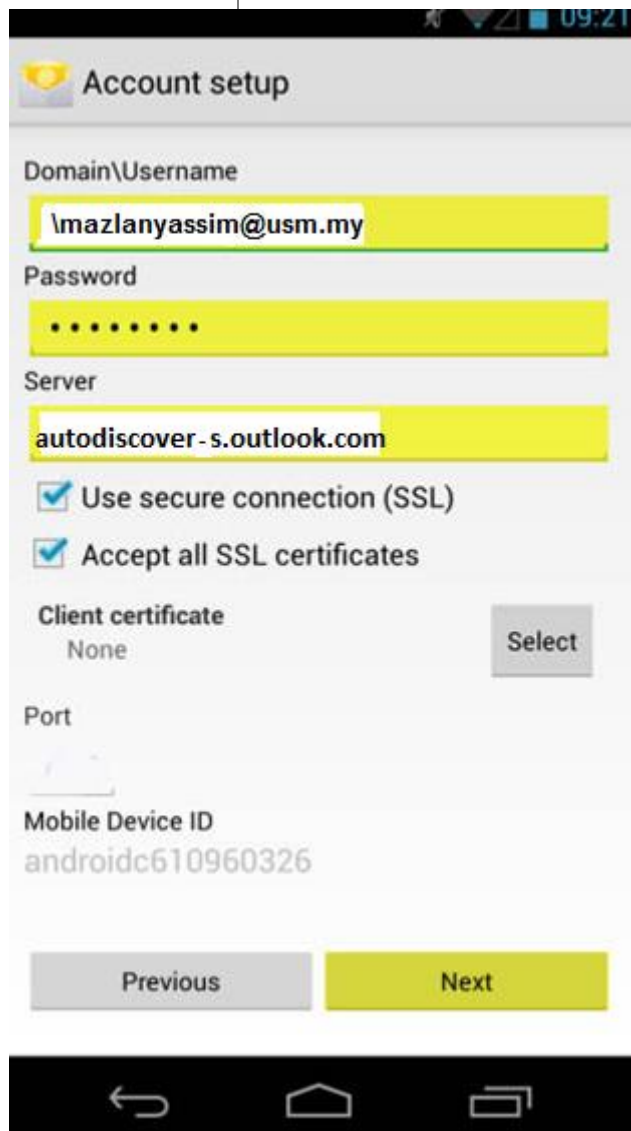


Click *Exchange*

Step 4

Enter values for the required fields:

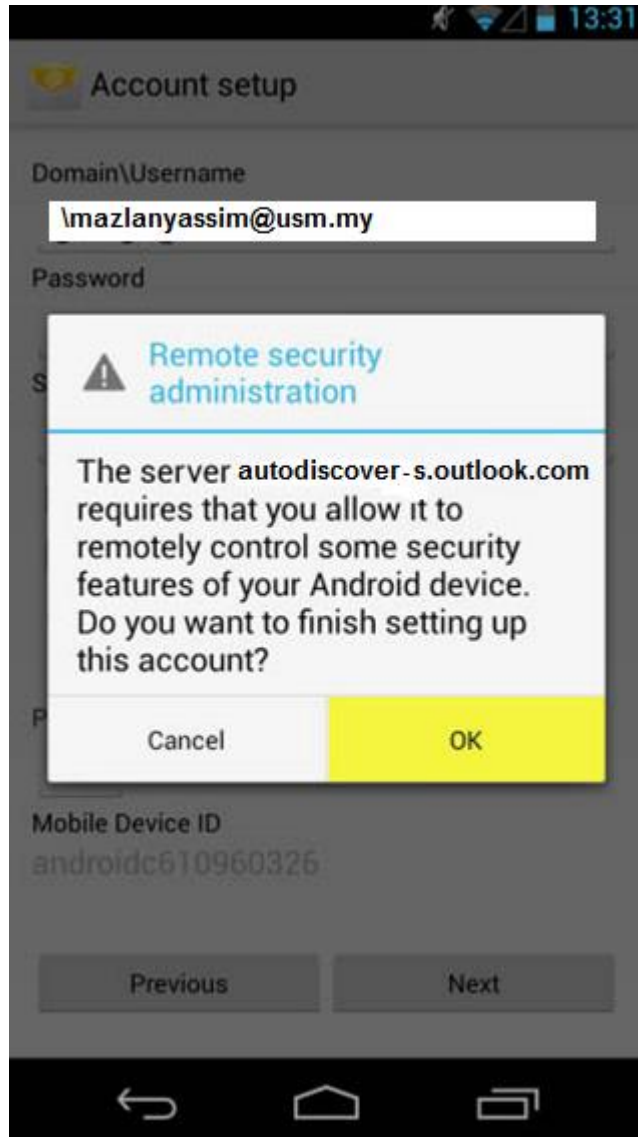
FIELD	INPUT
USERNAME	The full e-mail address that is linked with your Office 365 account
PASSWORD	The password chosen when setting up your Office 365 account
SERVER	<autodiscover-s.outlook.com>



Enter the required info and click **Next**

Step 5

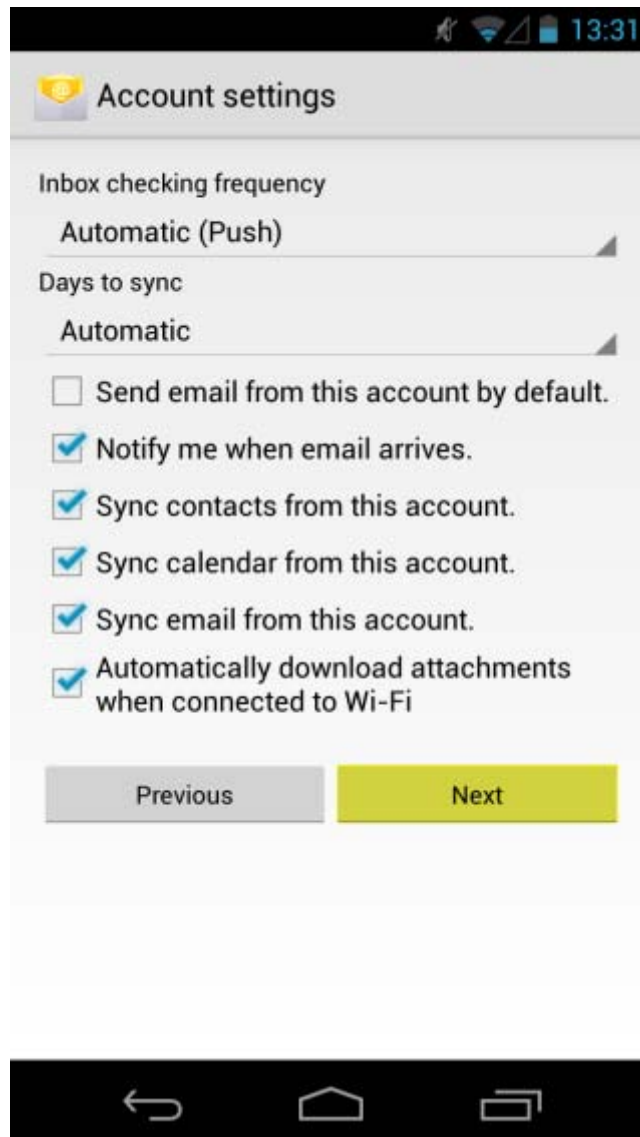
Click **OK** to allow for enhanced security.



Click **OK**

Step 6

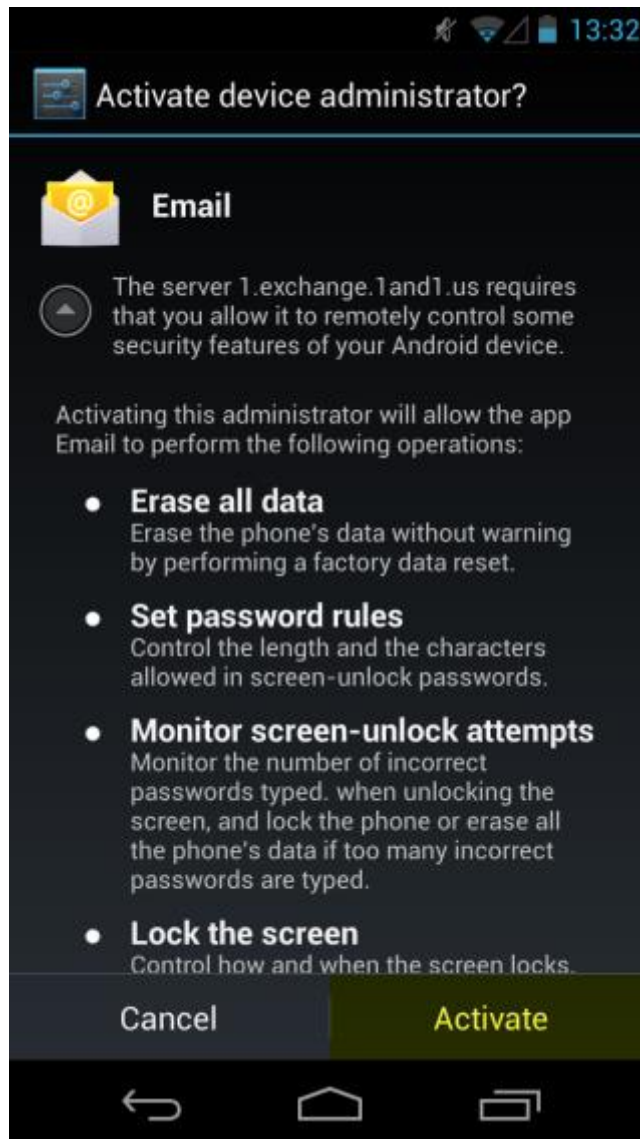
Configure additional settings based on your preference and click **Next**.



Configure *additional settings* and click **Next**

Step 7

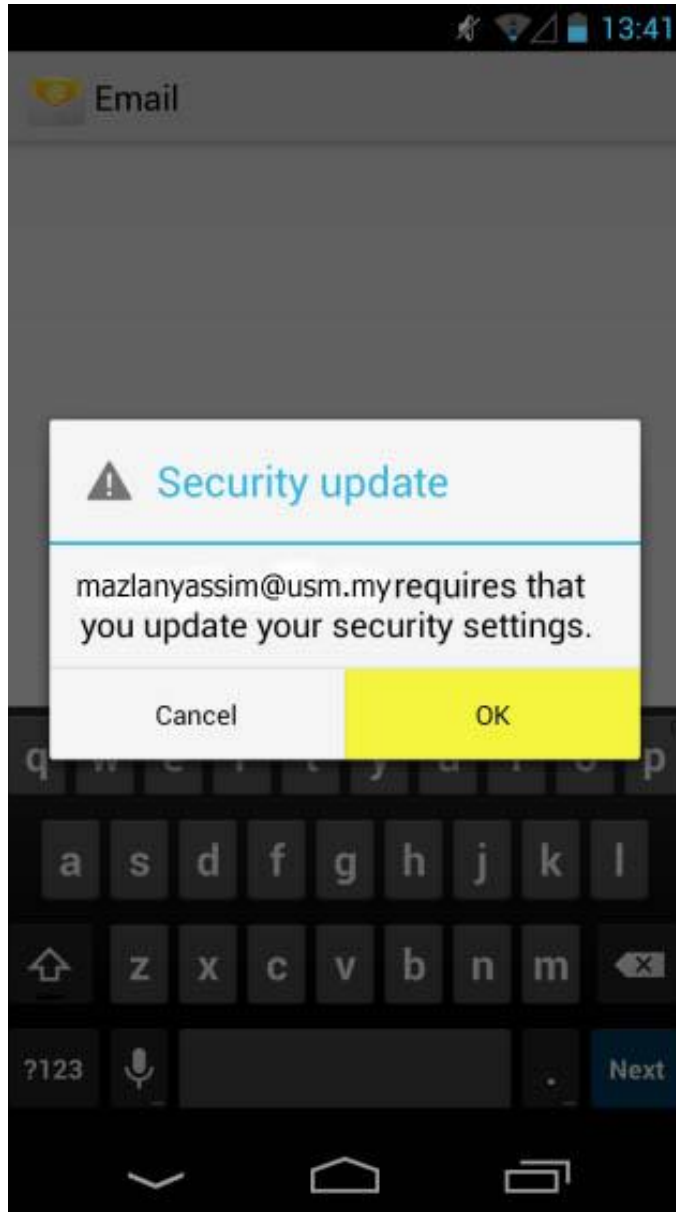
Click OK to update your security settings.



Click the **OK** button

Step 8

Click **Activate** to enable the enhanced security settings.



Click Activate

Step 9

Enter a name for the Exchange mailbox now set up on your phone and click **Next**. It is suggested to use your 1&1 e-mail.



*Enter a name for the mailbox and click **Next***