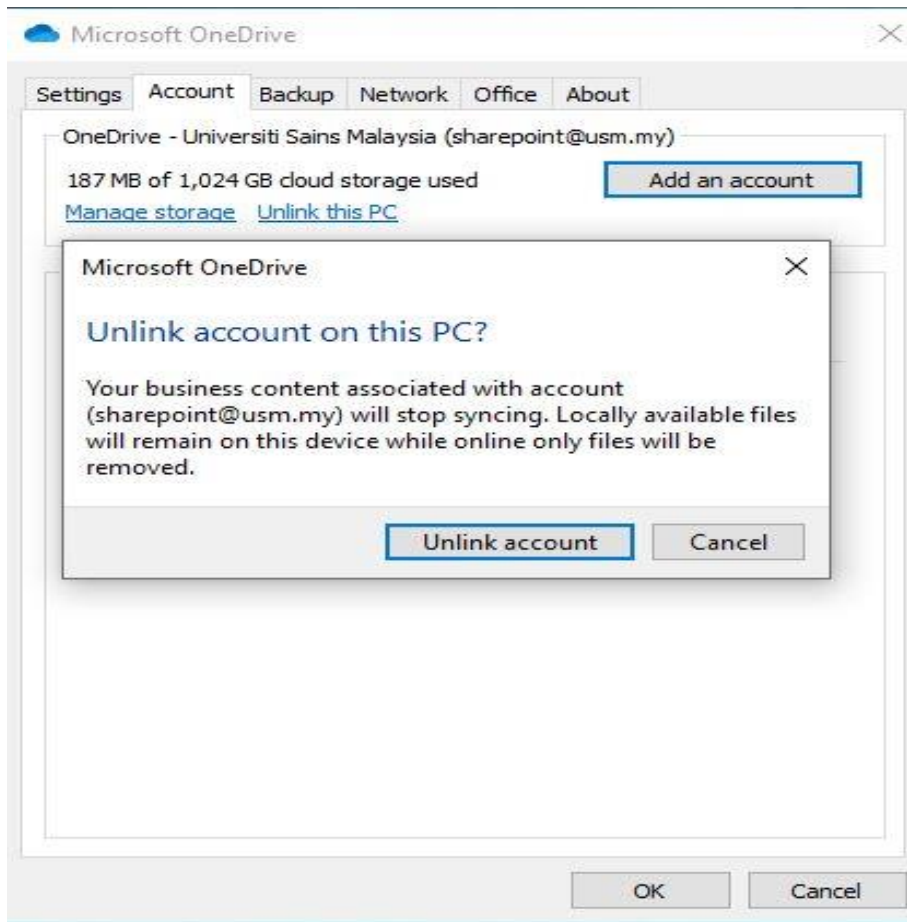
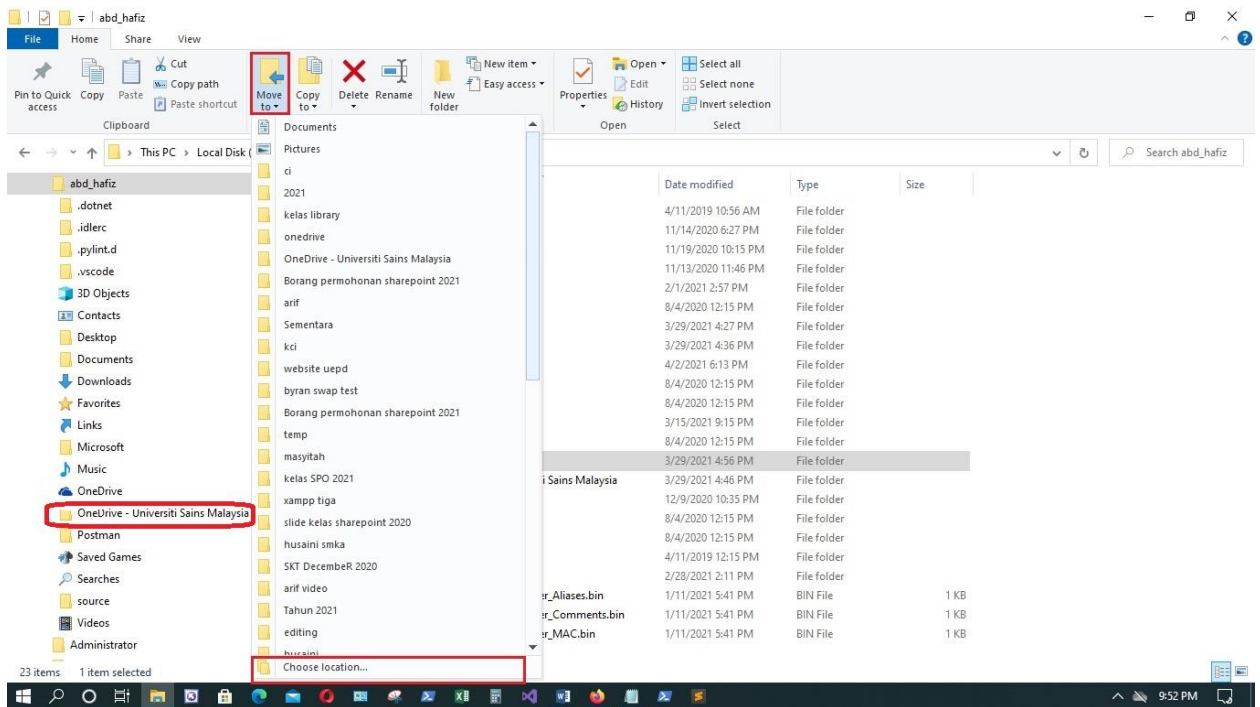


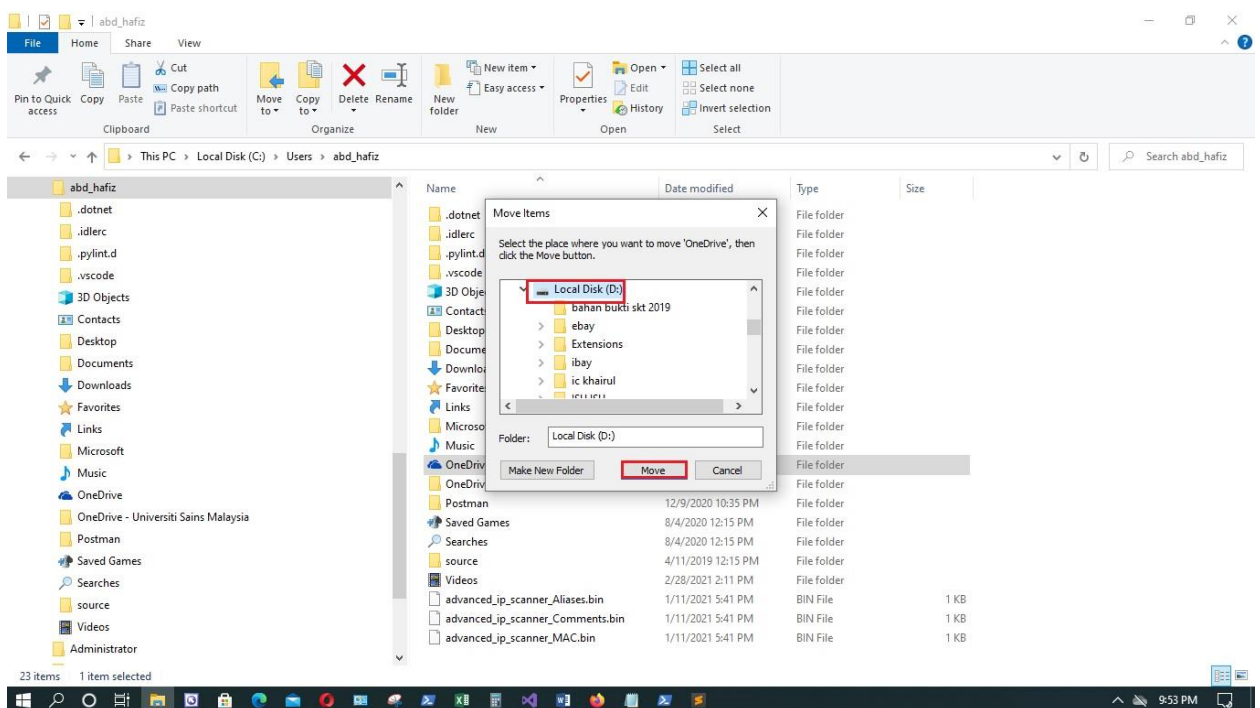
1. Disconnect Onedrive



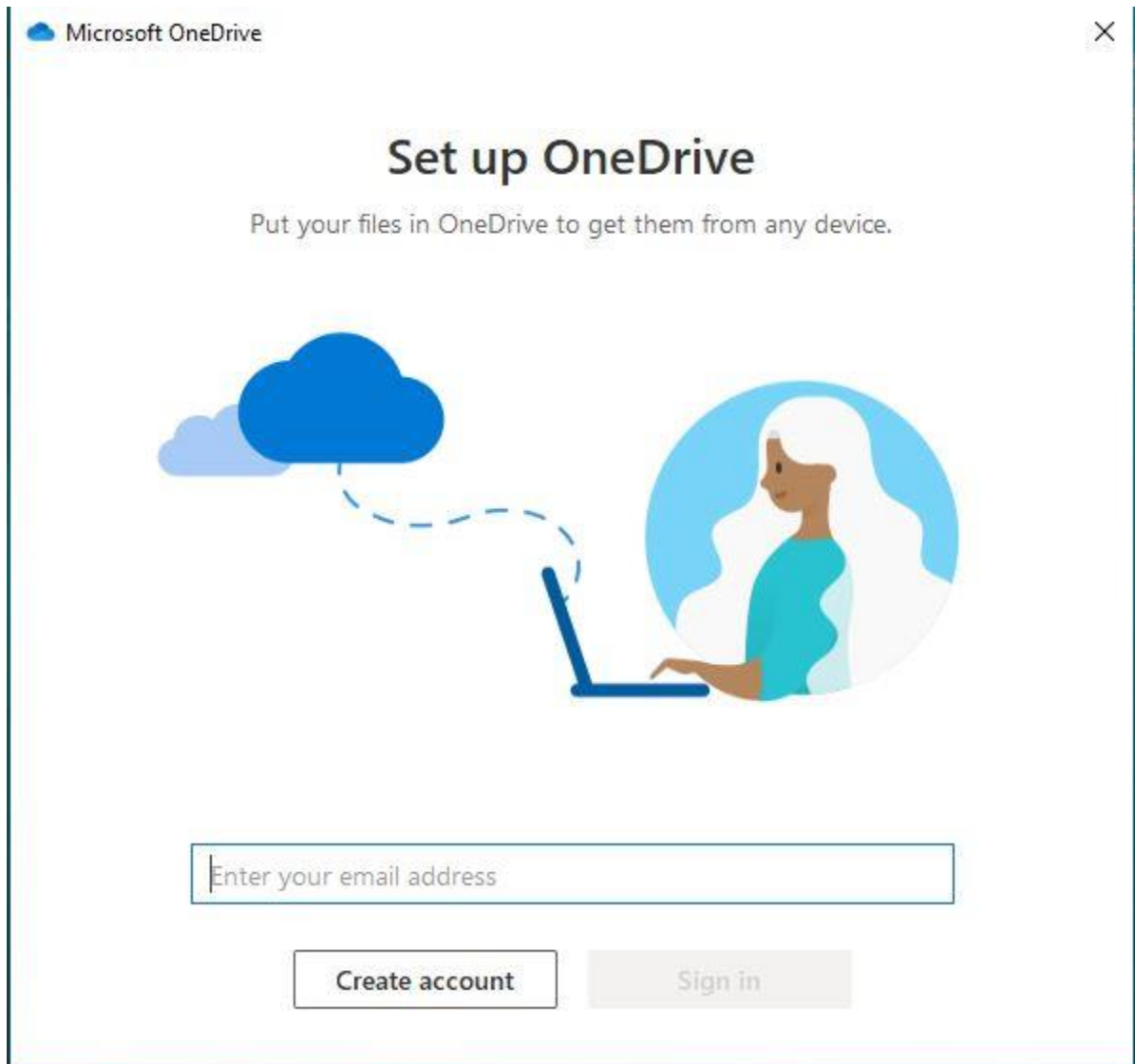
2. Move Onedrive- Universiti Sains Malaysia folder then Click choose location



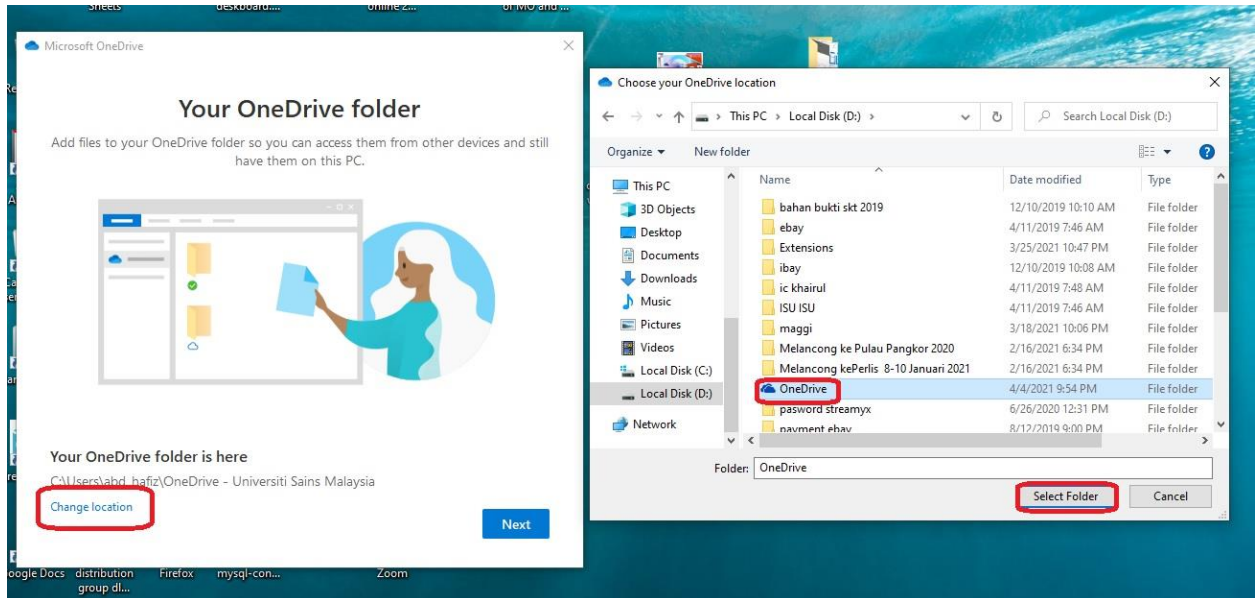
3. Change to local disk D:



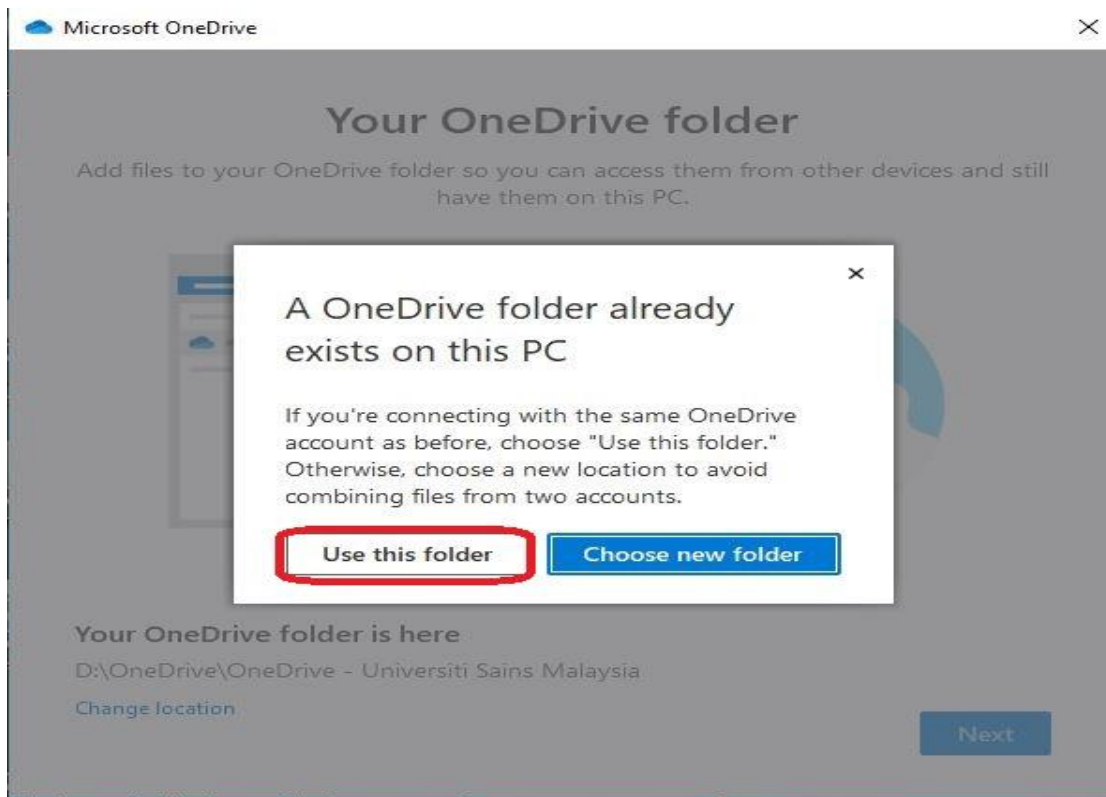
4. Setup Onedrive, masukkan emel ID then Click sign in



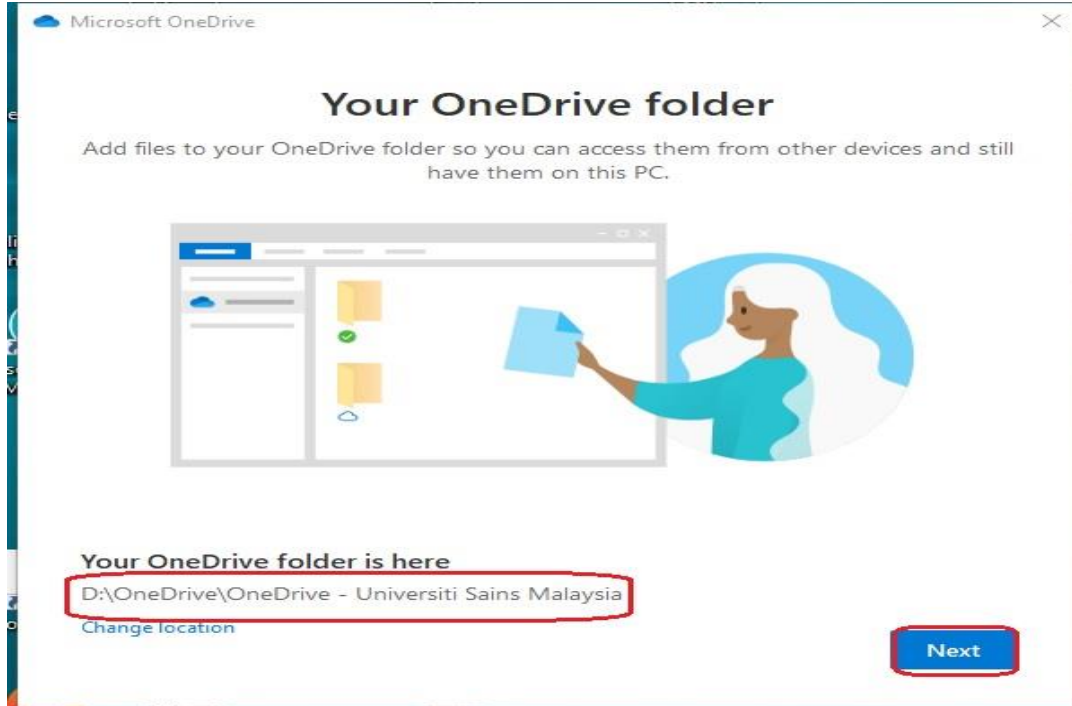
5. Click change location to drive D: then Click onedrive then Click select folder



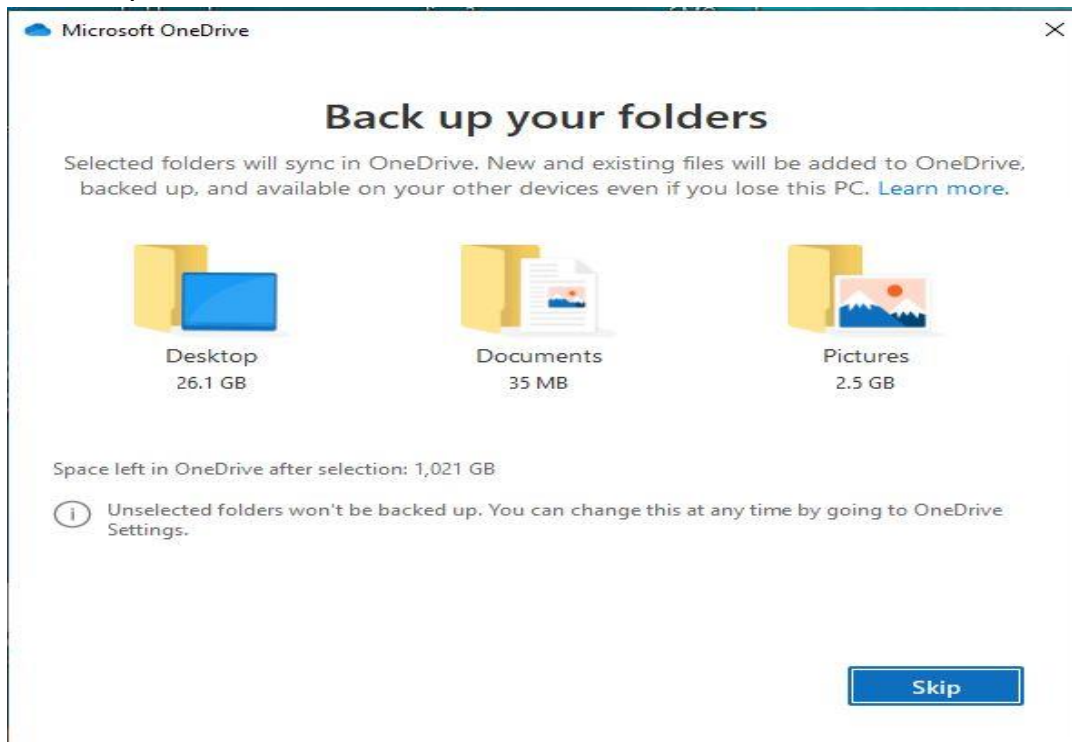
6. Click use this folder



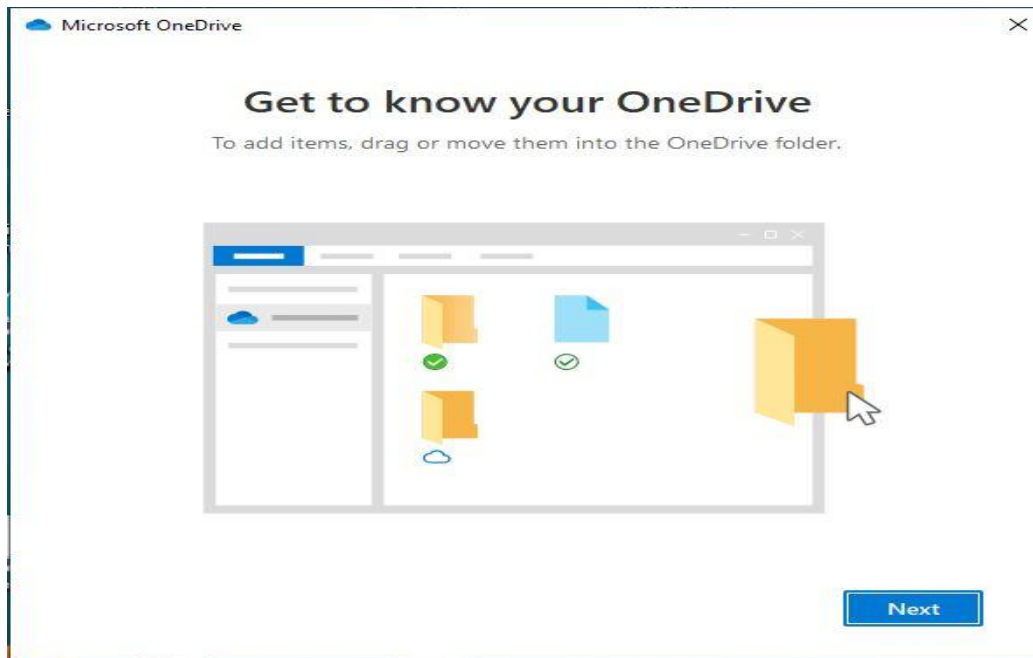
7. Click Next



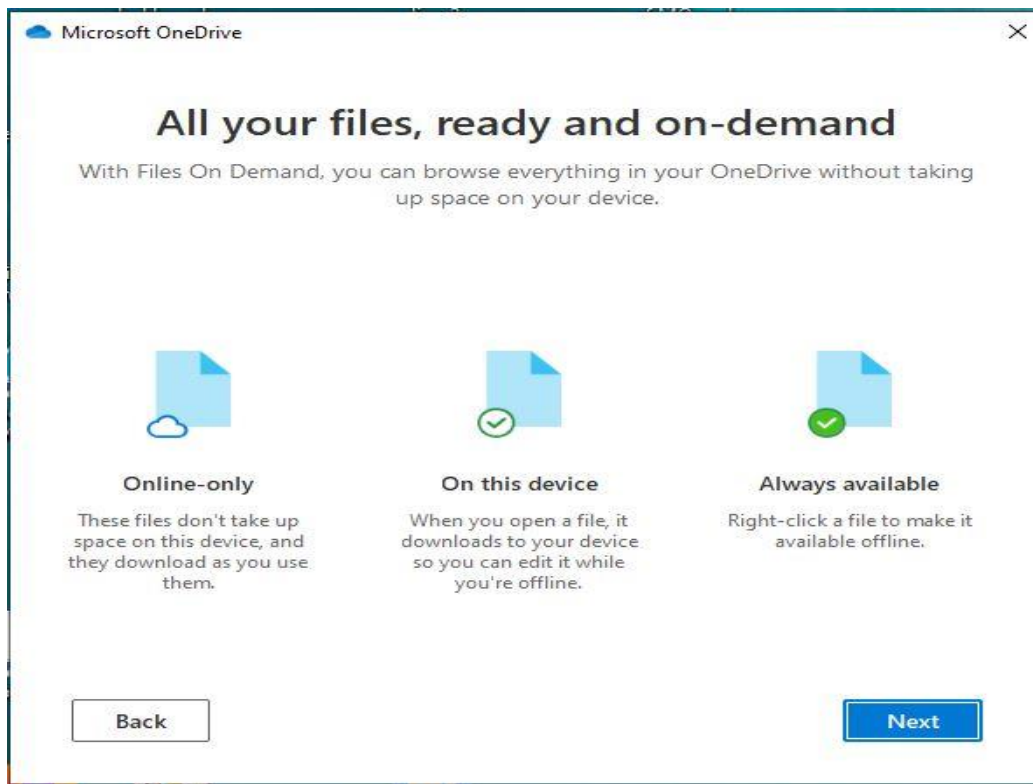
8. Click Skip



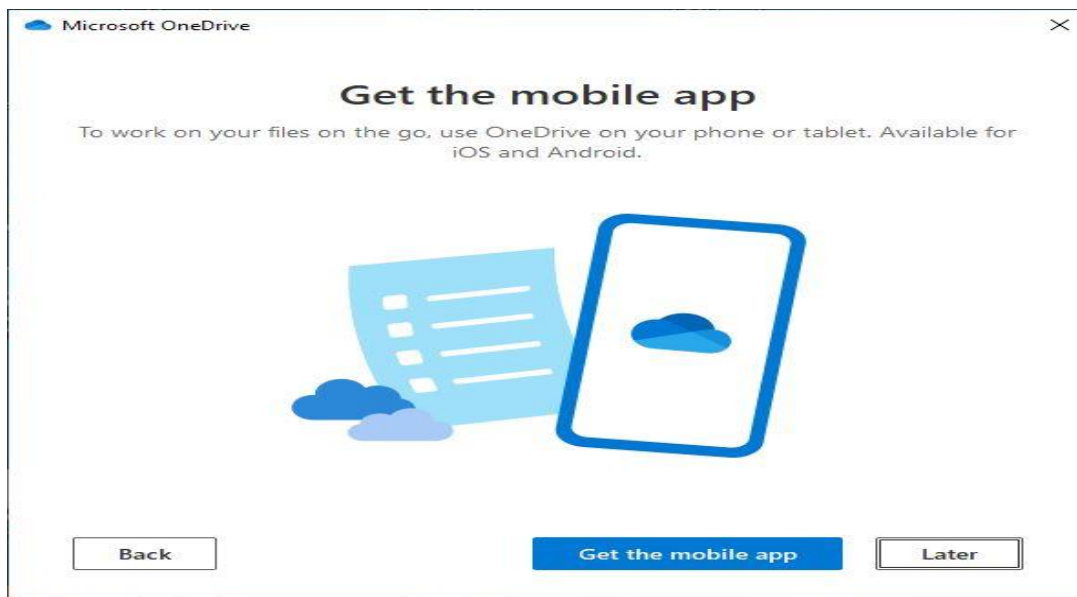
9. Click Next



10. Click Next



11. Click Later



12. Click open my Onedrive folder

